

# FROELICK GALLERY

For immediate release:

## Five From Brooklyn:

Clare Grill, Nat Meade, Ryan Mrozowski, Michael Schall, Mike Womack

September 1 to October 2, 2010

First Thursday Reception: September 2, 5pm – 8:00pm

Exhibit Tour & Discussion with the Artists: Saturday, September 4<sup>th</sup>, 11am.

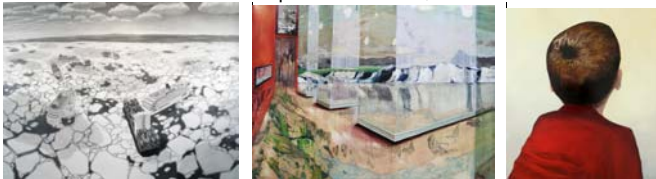
714 NW Davis St, Portland, OR 97209

503-222-1142 [info@froelickgallery.com](mailto:info@froelickgallery.com) [www.froelickgallery.com](http://www.froelickgallery.com)

Gallery Hours: Tuesday – Saturday 10:30 to 5:30pm



L to R: Mike Womack sculpture & detail; Nat Meade



L to R: Michael Schall, Clare Grill, Ryan Mrozowski

Froelick Gallery is pleased to present the work of five compelling, young artists from Brooklyn, New York: **Clare Grill, Nat Meade, Ryan Mrozowski, Michael Schall, and Mike Womack**. These diverse artists met during graduate studies at the Pratt Institute and have remained collegial proponents and agitators for each others work. Each is actively pursuing professional careers exhibiting in New York, Los Angeles, Seattle, and Europe. Their work was chosen for inclusion by Nat Meade, an artist represented by Froelick Gallery. "Five From Brooklyn" comprises select work from the past 3 years in media including video, light projection, sculpture, works on paper, and paintings.

**Grill** is known for subtly edited views, obscured & overlapping passages, personal narrative and observed familial settings. Her paintings slowly exhale articulate emotion and concept, while not allowing didactics to overwhelm.

**Meade** builds upon historic painting genre and technique with modern references. His character studies bring us quirky fellow humans with frailty and humor.

**Mrozowski** paints gatherings of people in odd and dark situations. His thinly layered & streaked paint effectively captures fleeting, mysterious moments.

**Schall's** exquisitely detailed graphite drawings are featured in two volumes of McSweeney's quarterly magazine. His subjects range from Apocalyptic cataclysms and über quiet moments in nature.

**Womack's** sculptures laugh at efforts to decode visible stimulus, to capture images. Motion pictures, light projections and capturing ephemeral impressions motivate him. He reflects light beams to fabricate one image from another. His work is cerebral and hysterical.

[www.claregrill.com](http://www.claregrill.com)

[www.natmeade.com](http://www.natmeade.com)

[www.ryanmrozowski.com](http://www.ryanmrozowski.com)

[www.michaelschall.com](http://www.michaelschall.com)

[www.mwomack.com](http://www.mwomack.com)

For reproduction images and resumes for each artist contact Froelick Gallery.

A selection of works are now available for preview at: [www.froelickgallery.com](http://www.froelickgallery.com)